



BRIDGE BUGLE

Bridge School
celebrates
it's
78th Year
of operation!

INSIDE THIS ISSUE:

<i>Brake's Take</i>	2
<i>Attendance Rises</i>	2
<i>New Staff</i>	2
<i>September Calendar</i>	3
<i>Important Dates!</i>	4

Special points of interest:

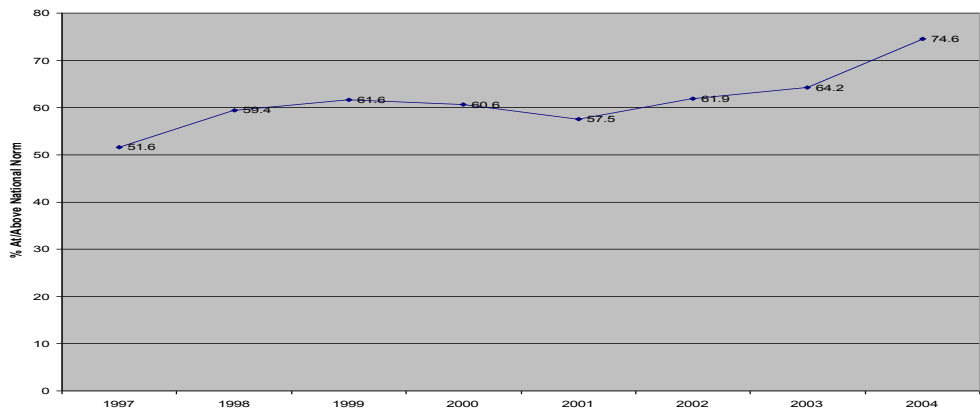
- Bridge Ranked in Top 10% of CPS Schools!
- New Speed Bumps
- 2004-2005 CPS Dates



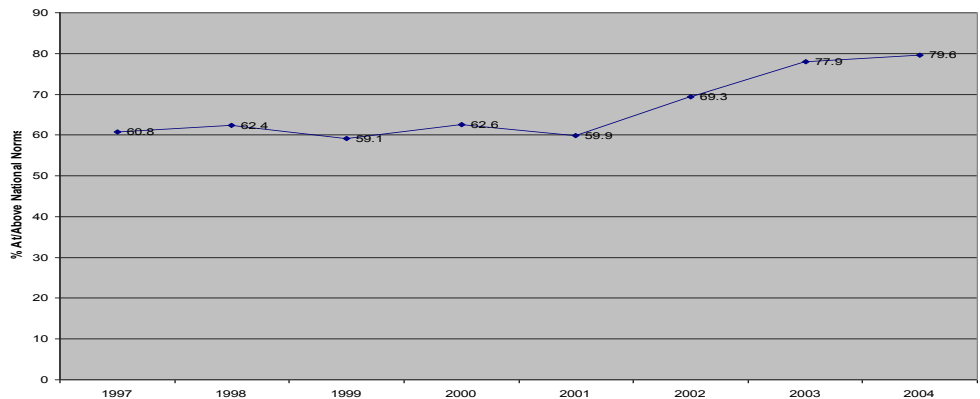
Children are apt to live up to what you believe of them.
Lady Bird Johnson

BRIDGE SCHOOL NOW RANKED* IN THE TOP 10% OF ALL CPS SCHOOLS!

Bridge School 1997-2004 ITBS Reading Scores



Bridge School 1997-2004 ITBS Math Scores



* As measured by CPS City-Wide ITBS Reading/Math Scores

BRIDGE SCHOOL GETS SPEED BUMPS

Speed bumps have been installed on the streets surrounding Bridge School. The recent road improvements should help increase the safety of our children coming to and from school. Please watch out for our children when driving.





**Students/Teachers
Staff/Parents**

Would you like to have a poem, article, short story, event, or other item of interest

published in the Bridge Bugle?

Submit your item to

Dr. Brake

on computer disk

(Microsoft Word format preferred)

no later than the third

week of the month for publication in the next

month's school newspaper.



Do you have any ideas, suggestions, or comments on ways to improve our school and the services that our children receive? If so, please call, write a letter, or see me to share your ideas. Your input is greatly appreciated.

Thank You!

Dr. Brake

BRAKE'S TAKE

Welcome back to another great year at Bridge Elementary School. The 2003-2004 school year was our best year ever. Our children scored the highest gains on the ITBS reading test compared to the other 43 schools in our Area 1 region. Math scores and student attendance also showed positive gains for our school. (see pgs. 1&2)

The 2004-2005 school year will also prove to be a winning year through the hard work of our students, staff, and parents working together.

Let's continue to work together in partnership and provide the best possible education for our precious children. The future looks bright for the Bridge School family!

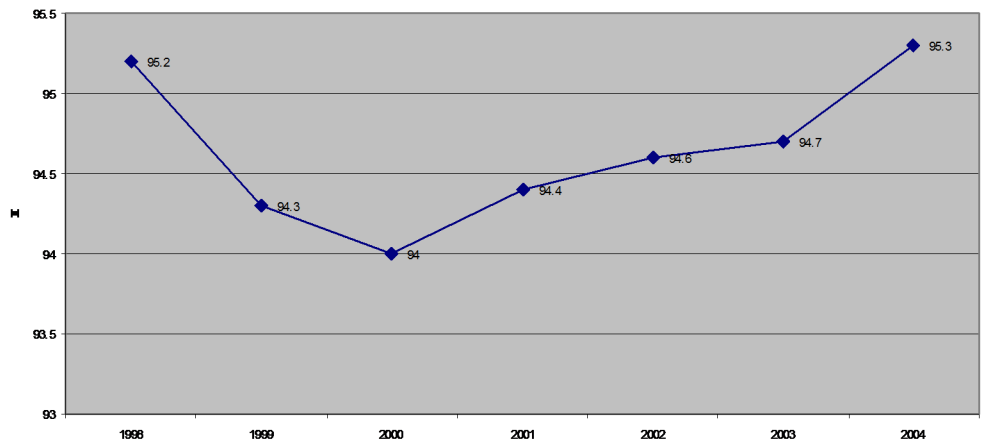


Your Principal,

Dr. Christopher Brake

2003-2004 Student Attendance Improves!

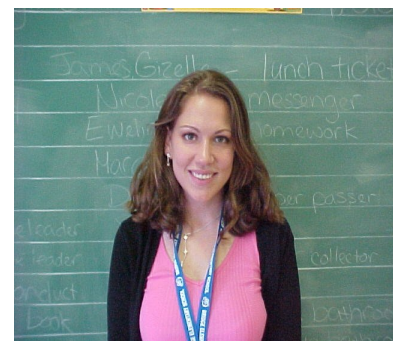
Bridge School 1998-2004 Student Attendance Rate



NEW FACES AT BRIDGE SCHOOL



Mrs. Angela Banaszek
7th Grade



Miss Nicole Argiris
8th Grade

September 2004

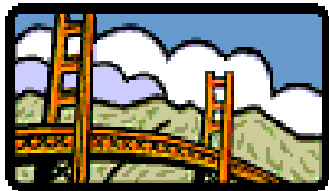
Welcome Back!

Sun	Mon	Tue	Wed	Thu	Fri	Sat
			1	2	3	4
5	⑥ <i>Labor Day</i>	7	8	9 <i>Open House 6-7:30 PM</i>	10	11
12	13	14	15	16 <i>PTA/LSC Meetings 6:00 PM</i>	17	18
19	20	21	22	23	24	25
26	27	28 <i>1/2 Day Professional Development 11:08 Dismissal</i>	29	30		<i>Fall Book Fair Oct. 12-15</i>



Indicates day of non-attendance for students

Special Back-to-School



Bridge Elementary School
3800 N. New England
Chicago, Illinois 60634
773-534-3718
Principal:
Dr. Christopher Brake
Assistant Principal:
Mrs. Margaret Taylor

LSC

Parent Representatives:

Mr. William Doyle
Mr. Michael Herrity
Mrs. Yvonne Majewski
Mrs. Wioletta Rakoczy
Mrs. Pamela Sparks
Mrs. Renata Zabiega

Community Representatives:

Mrs. Cheryl Filippini
Mrs. Pat Walenga

Teacher Representatives:

Mrs. Linda Barshop
Mrs. Ideria Page

Administration:

Dr. Christopher Brake

PTA

President:

Mrs. Karen Dubicki

Vice-President:

Mrs. Lora Niewinski

Secretary:

Mrs. Jeannie Doyle

Treasurer:

Mrs. Kathy Herrity



**Welcome
Back!**

IMPORTANT CPS DATES 2004-2005 SCHOOL YEAR

Holidays

October 11, 2004 - Columbus Day*
November 11, 2004 - Veterans Day Observance*
November 25 & 26, 2004 - Thanksgiving Holiday*
January 17, 2005 - M.L. King's Birthday*
February 21, 2005 - Presidents Day*
March 7, 2005 - C. Pulaski's Birthday*
May 30, 2005 - Memorial Day*

Vacations

Winter Vacation - December 20-31, 2004*
Spring Vacation - March 21-25, 2005*
Summer Vacation - Schools close for students on Friday, June 17, 2005

Report Card Pick-Up Parent-Teacher Conference Days

Wednesday, November 17, 2004*
Wednesday, April 20, 2005*

Report Card Distribution Days

Wednesday, February 2, 2005
Friday, June 17, 2005

Professional Development Days

Friday, November 12, 2004*
Friday, April 15, 2005*

Professional Development 1/2 Days

(Students are dismissed at 11:08 AM)

Tuesday, September 28, 2004
Thursday, October 21, 2004
Friday, November 19, 2004
Wednesday, December 15, 2004
Friday, January 21, 2005
Tuesday, February 15, 2005
Friday, March 11, 2005
Monday, April 11, 2005
Tuesday, May 5, 2005
Friday, May 27, 2005

Teacher Institute Days

Tuesday, November 2, 2004*
Friday, January 28, 2005*
Thursday, June 16, 2005*

***Indicates days of non-attendance for students**